

LED Lit Floating Shelves

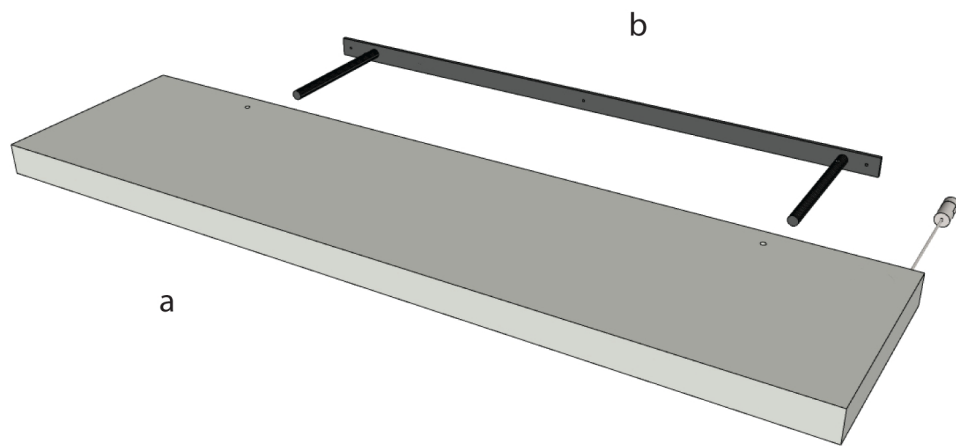


Installation Guide

omg

optical • marketing • group

© 2018 | Bill Gerber | billg@omghome.net

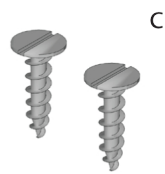


Shelf Parts list

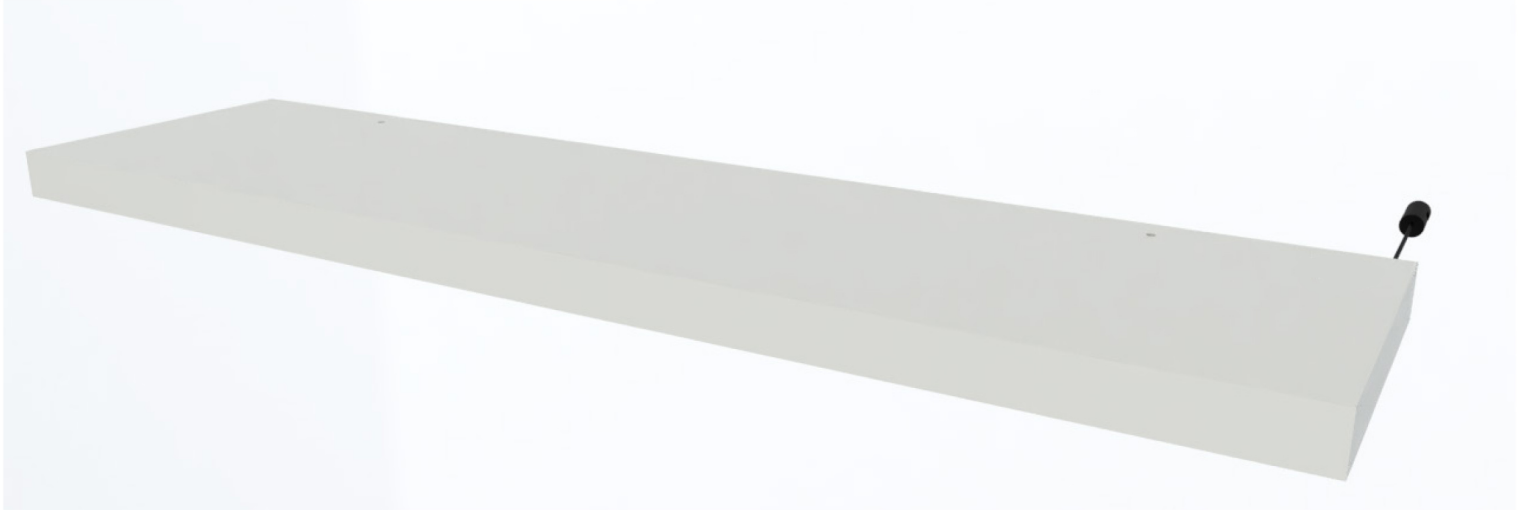
a) Shelf with LED strip, wired for usage

b) Wall mounting bracket

c) Securing screws (Qty 2)



Easy to Install Fixtures

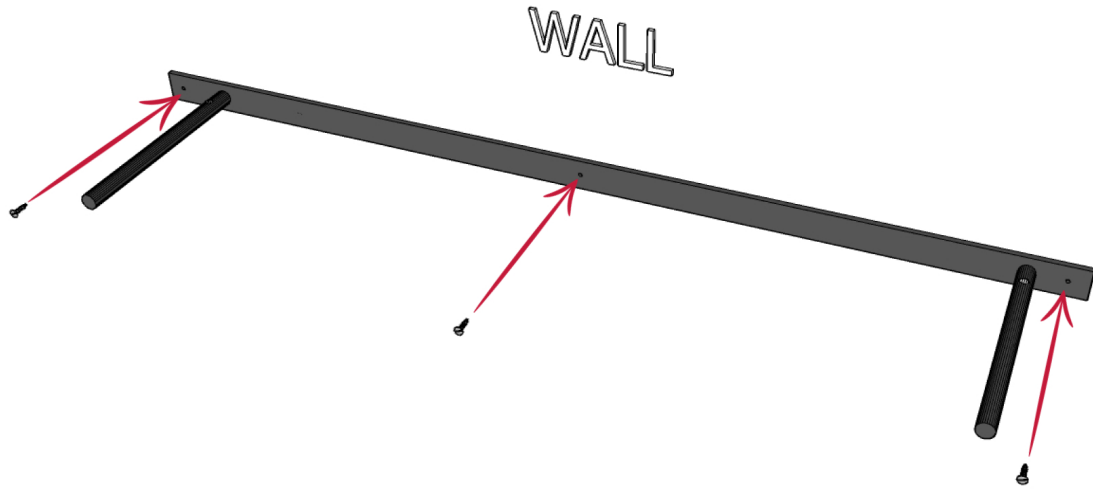


Front View

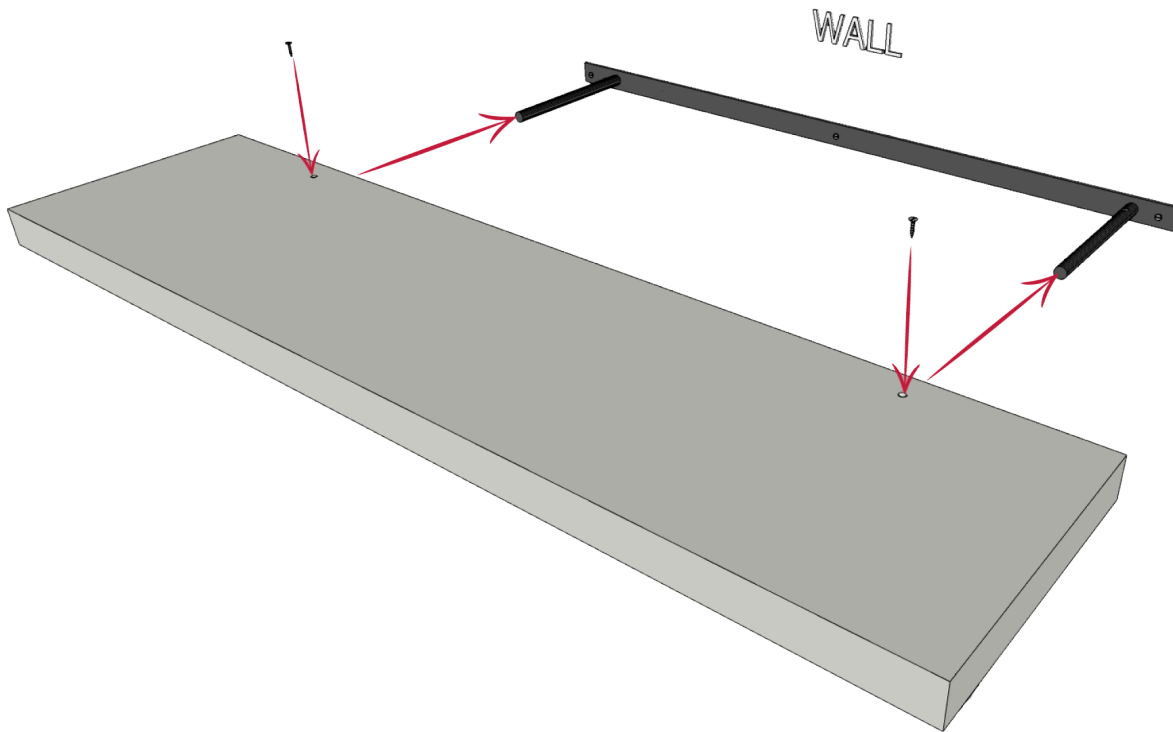


Back View

OMG Lit Floating Shelves are not only easy to install, but are the perfect way to present today's fashion eyewear. As an added bonus, each shelf has the ability to be wired for a digital device of your choice through the access holes on the top and bottom of each shelf. (Middle shelf recommended)

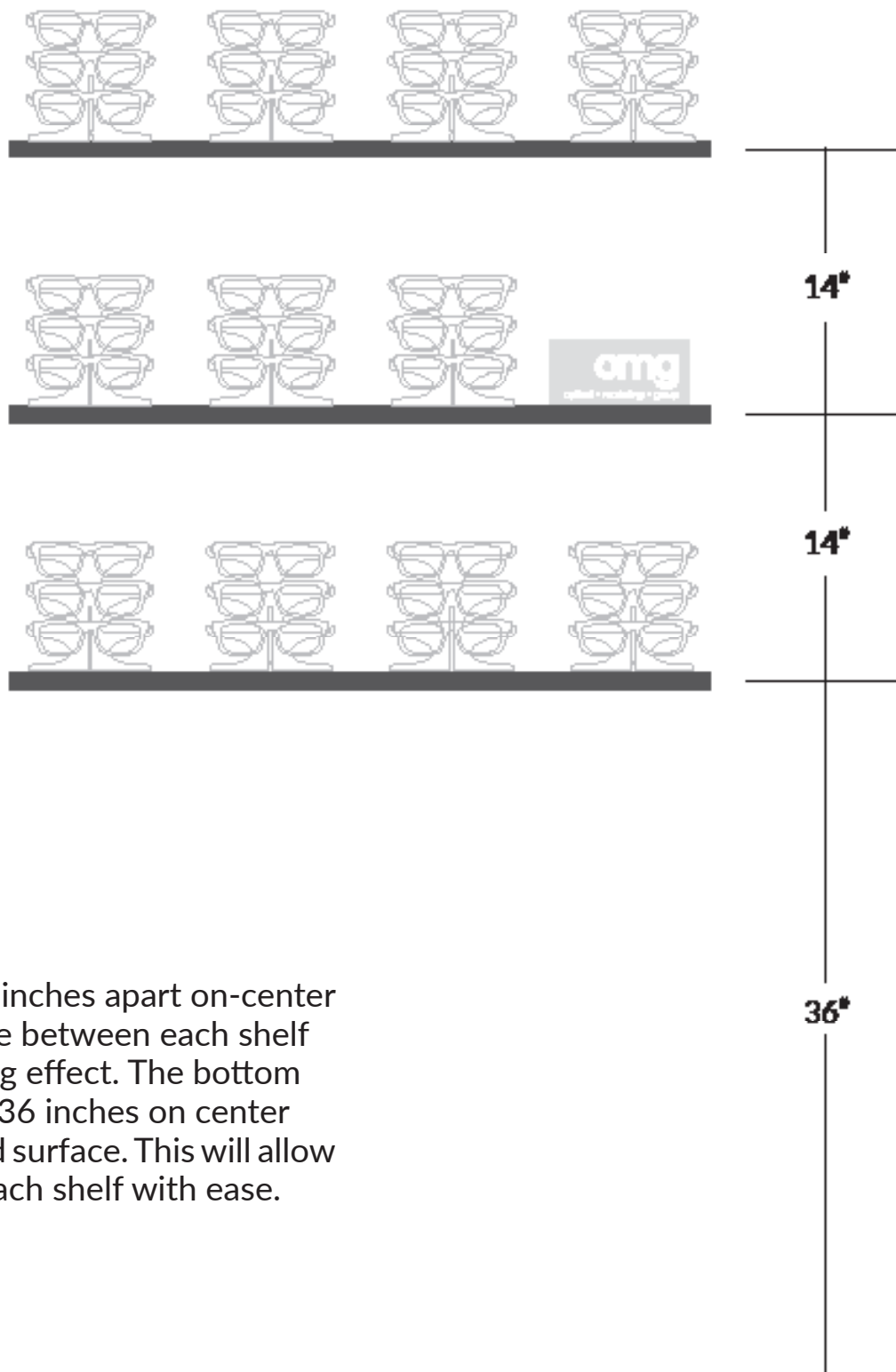


1. Screw metal mounting bar to wall (screws not included). **If stud is not lining up with access holes, feel free to drill through the metal mounting bar to secure.**



2. Slide shelf onto bracket;
secure with screws provided.
Caps go on the top and bottom
Mean WEof the shelf.

Recommended Shelf Placement



Install the shelves 14 inches apart on-center to allow enough space between each shelf to get the best lighting effect. The bottom shelf should be hung 36 inches on center from the floor finished surface. This will allow customers to reach each shelf with ease.

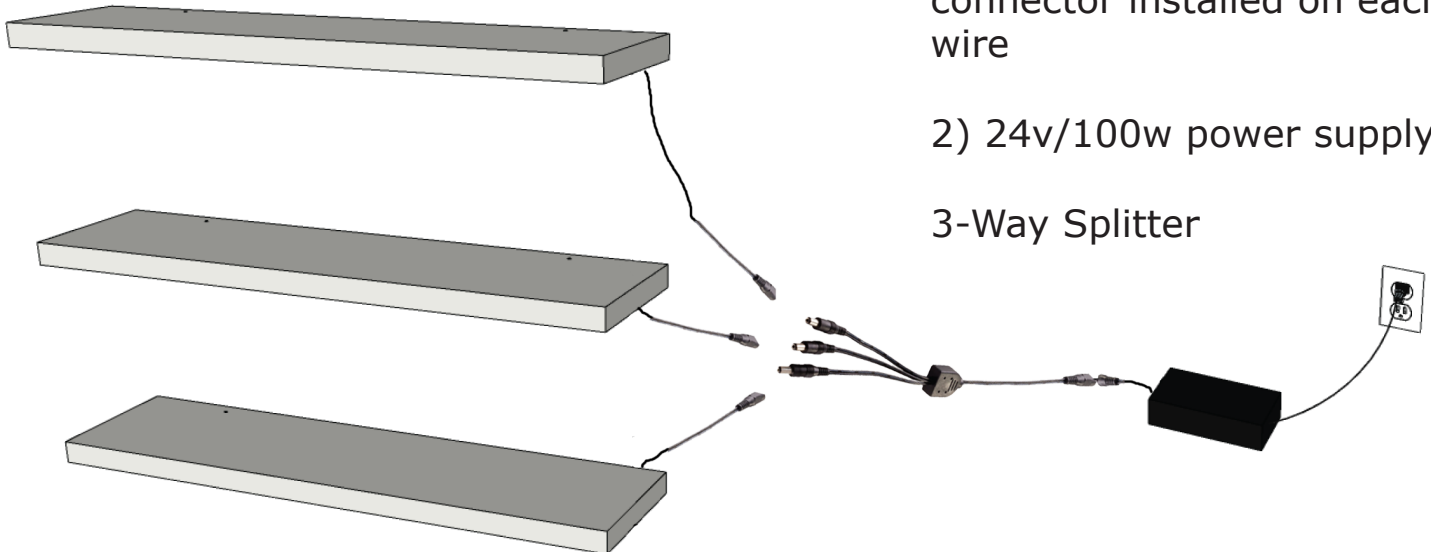
"Plug & Play" Shelves

What you will receive:

1) Shelf with barrel connector installed on each wire

2) 24v/100w power supply

3-Way Splitter



LED Power Supply



3-Way Splitter

1) Position the power supply in a conveniently accessible location hidden from public view.

2) Plug in up to (3) shelves to each power supply via the 3-way splitter

3) Complete

Important:

Electrician is solely responsible for ensuring the wiring done is up to local and state coding requirements for clients safety.

Hard Wiring Shelves

(under side of shelf)



LED Strip Light installed
in plastic case

What you will receive:

Shelf with 8' of bare wire lead (+Black, and -Red) wires.

24v / 100w power supply



8' of bare wire lead

INSTRUCTIONS:

- 1) Position the power supply in a conveniently accessible location hidden from public view.
- 2) Run wiring through prepared holes in the wall where shelving units will go. This hole should be lined up with the hole in the back of the shelf.
- 3) Connect shelf wires to power supply wires in accordance to local rules and regulations. We recommend the use of a junction box to house all connections.

Important:

Electrician is solely responsible for ensuring the wiring done is up to local and state coding requirements for clients safety.

Wiring Specifications

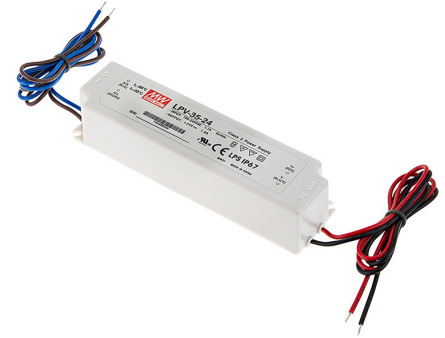


100 Watt 24V DC Power Supply

- Finish: Black
- Height: 1.6"
- Input Current: 1.2 mA
- Input Voltage: 100 to 240AC
- Length: 6.5"
- Output Voltage: 24DC
- Power (Watts) 100
- Rating: UL, CUL, CE
- Width: 2.45"

Low Voltage 3-Way Splitter

- Diameter: .43"
- Length: 7.78"
- Variation: 2.1mm ID



24V Power Supply

- Class 2 power supply
- Universal AC input: 100-240 VAC
- Withstand 300VAC surge input for 5 seconds

Product Specifications

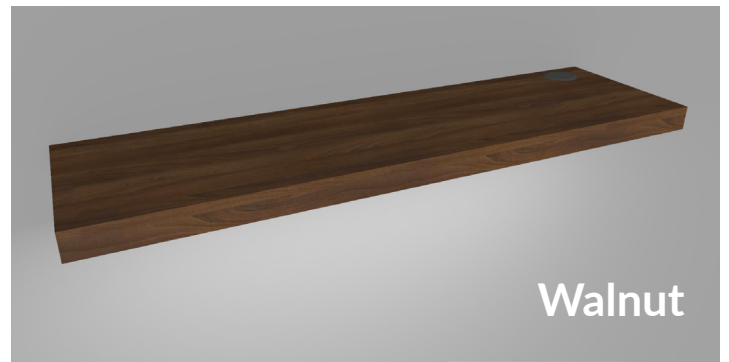
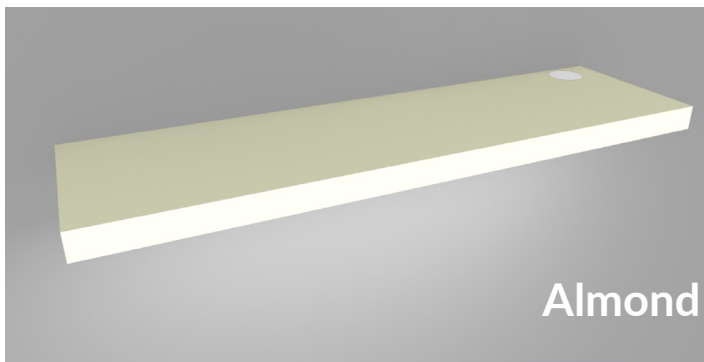
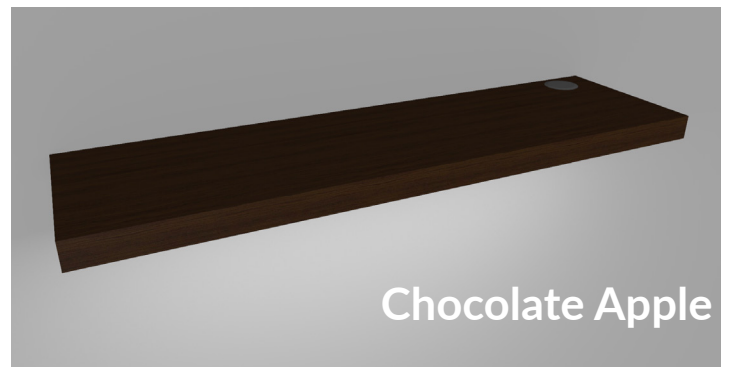
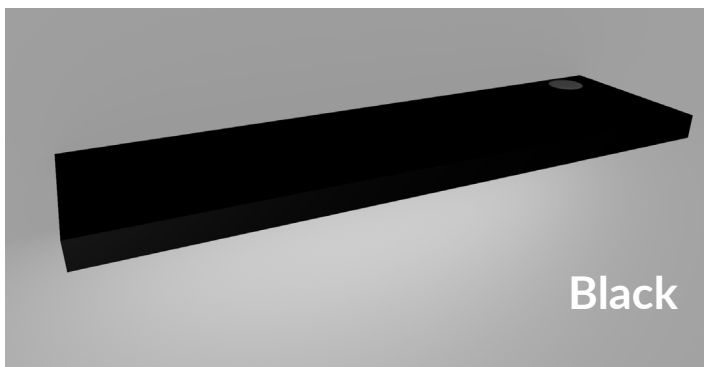
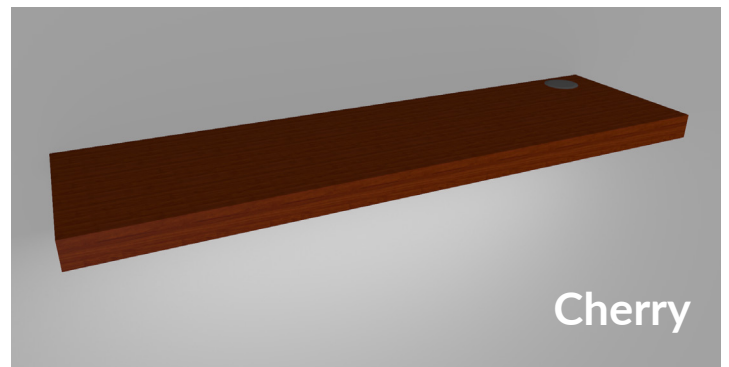
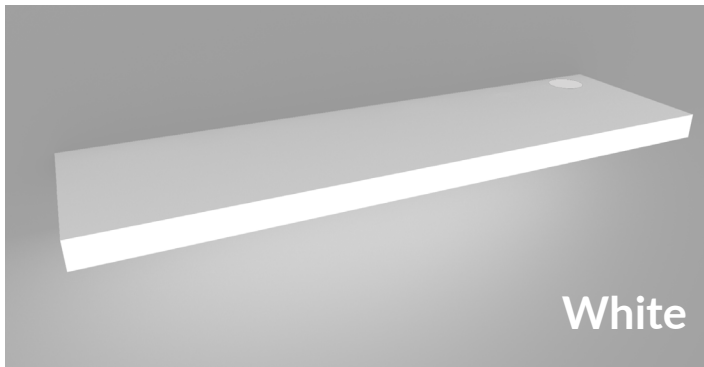
Shelves

- 36 by 10 by 1 1/2 inches in size (custom sizes available up to 5 feet wide).
- Dual access holes 1.75 inches in size.
- Medium Density Fiberboard (MDF) covered in Laminate.
- Powder Coated Steel Bracket.

Lighting

- Neutral White. (6500° Kelvin.)
- CRI = 90+.
- Not waterproof.
- 3498 mW/meter = 1152 lumens/meter.
- 24 volts DC.
- 56.4 watts (3.4 watts/foot = 11.3 watts/meter.)
- Length: 16.4 ft = 5 m.
- Width: 0.39 in = 10 mm.
- Height: 0.08 in = 2 mm.
- LED spacing: 0.33 in = 8.3 mm.
- UL, RoHS.
- 50,000 hours expected lifetime.
- No Ultra-Violet emissions (except for the special UV version)

Finishes



Custom laminate finishes available. For information on custom options, please contact OMG at info@omghome.net, or call us at 978-712-0664.

Thank you for choosing OMG!



We hope you enjoy your purchase!

If you're seeking a contemporary look that is highly functional, look no further than OMG. With over 20 years of experience designing and developing retail spaces for major brands to progressive optometric practices, OMG is ready to help you realize the space of your dreams. Contact us today for all your optical merchandising needs.